

# Spiral<sup>®</sup> Why choose the Spiral<sup>®</sup> method



The Spiral<sup>®</sup> method enables increased analysis capacity in the lab. It allows a standardized bacterial plating with a sensitivity of 30 to 10 million CFU/ml on 1 Petri dish. No need for serial dilutions.

### Manual plating method

This method requires repetitive actions: at least **4 dilutions** and **4 successive platings** are necessary to obtain one good and readable Petri dish.

The diagram illustrates the manual plating process. It shows four sequential steps, each involving a 1/10 dilution followed by spreading 0.1 ml of the sample onto a Petri dish. The resulting Petri dishes are shown after 24 hours of incubation. The first three dishes are marked with a red 'X', indicating they are not readable. The fourth dish is marked 'OK', indicating it is readable.

### Automatic Spiral<sup>®</sup> method

With this method, make your analysis on **1 single Petri dish!**

The diagram shows the automatic Spiral method. A hand is shown operating the Interscience Spiral machine. A Petri dish with a spiral pattern is shown, and a callout says "All dilutions on 1 Petri dish!".

- 30 to 10 million CFU/ml on 1 single Petri dish
- Less consumables: up to 75% savings!
- Full plating cycle in 25 seconds!

# Scan<sup>®</sup> 300 Automatic colony counter

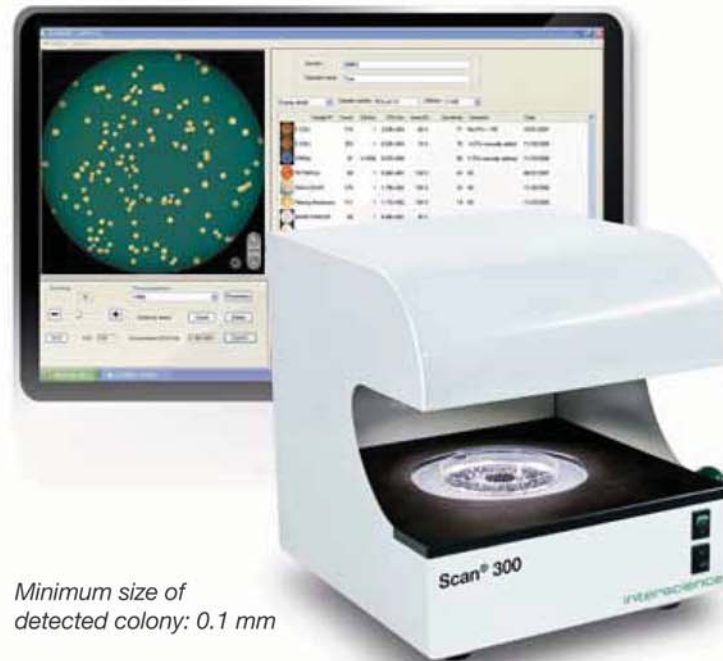
**3**  
YEAR  
GUARANTEE

**LIFETIME  
SERVICE**

Scan<sup>®</sup> 300 is an automatic colony counter with the essential features to start the automatic colony counting and is specifically designed for environments of food microbiology (PCA, VRBG, MRS...).

## Specifications

- CCD color camera, zoom x7
- 6 combinations of lighting and backgrounds
- Brightness, contrast and sensitivity are automatically optimized by the software
- Minimum size of detected colony: 0.1 mm
- Automatic separation of clustered colonies
- Creation of polygonal exclusion zones
- Long lasting LED lighting
- Export of data to Excel<sup>™</sup>, PDF
- Software in French, English, Japanese, Chinese, Russian



Minimum size of detected colony: 0.1 mm



High technology:



Traceability:



Delivered with: Scan<sup>®</sup> software CD-ROM/user manual/Firewire adapter: PCI, PCMCIA, Expresscard, 6/4pins

## Technical specifications

Scan <sup>®</sup> 300	
Resolution	640 x 480 pixels
Power	100-240 V - 50-60Hz
Size (L x W x H)	27 x 27 x 29 cm
Weight	6.6 kg
Reference	436 300

## Options



Barcode reader  
ref. 522 000



Adapter for  
55 mm dishes  
ref. 436 005

- ▶ Instant results
- ▶ Traceability: automatic saving of images and results
- ▶ LIMS connection and barcode reader
- ▶ Data export to Excel<sup>™</sup>
- ▶ Minimum size of detected colony: 0.1 mm

# Scan<sup>®</sup> 500 Automatic colony counter

**3**  
YEAR  
GUARANTEE

**LIFETIME  
SERVICE**

Scan<sup>®</sup> 500 is an automatic color colony counter providing quick and efficient counting of the colonies on the most common supports. Scan<sup>®</sup> 500 guarantees an excellent reproducibility and the automatic saving of images and results.

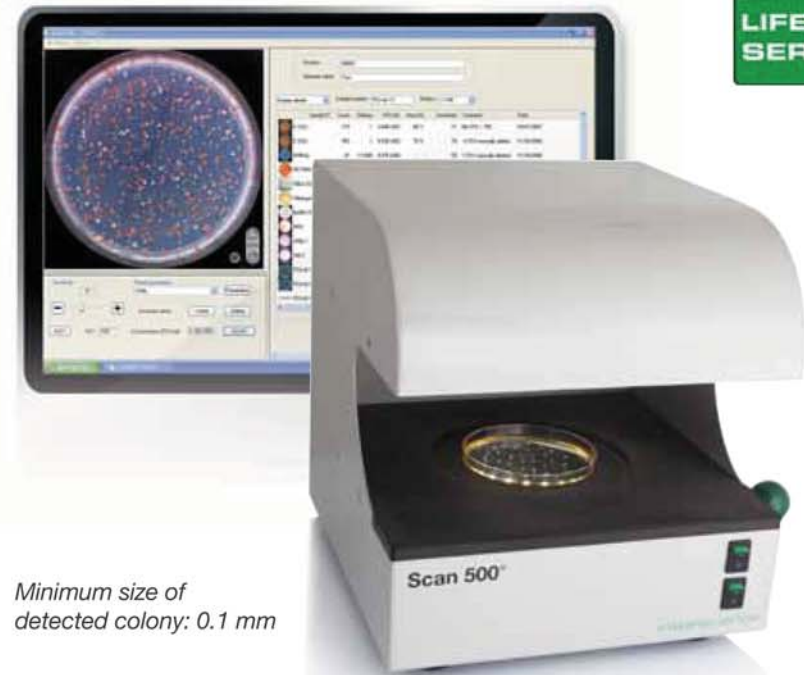
## Specifications

- Color CCD camera, zoom x7
- 6 combinations of lighting and backgrounds
- Detects and counts up to 7 colors on the same dish
- Brightness, contrast and sensitivity are automatically optimized by the software
- Adapts itself to any kind of agar
- Minimum size of detected colony: 0.1 mm
- Automatic separation of clustered colonies
- Creation of polygonal exclusion zones
- Long lasting LED lighting
- Software in French, English, Japanese, Chinese, Russian

### Counts on



Minimum size of detected colony: 0.1 mm



High technology:



Traceability:



Delivered with: Scan<sup>®</sup> software CD-ROM/user manual/Firewire adapter: PCI, PCMCIA, Expresscard, 6/4pins

## Technical specifications

Scan <sup>®</sup> 500	
Resolution	640 x 480 pixels
Power	100-240 V - 50-60Hz
Size (L x W x H)	27 x 27 x 29 cm
Weight	6.6 kg
Reference	436 000

## Options



Barcode reader  
ref. 522 000



Adapter for  
55 mm dishes  
ref. 436 005

- ▶ Instant results
- ▶ Traceability: automatic saving of all data, images and results
- ▶ Barcode reader and LIMS connection
- ▶ Data export to Excel<sup>™</sup>
- ▶ Minimum size of detected colony: 0.1 mm

# Scan<sup>®</sup> 1200 Automatic colony counter

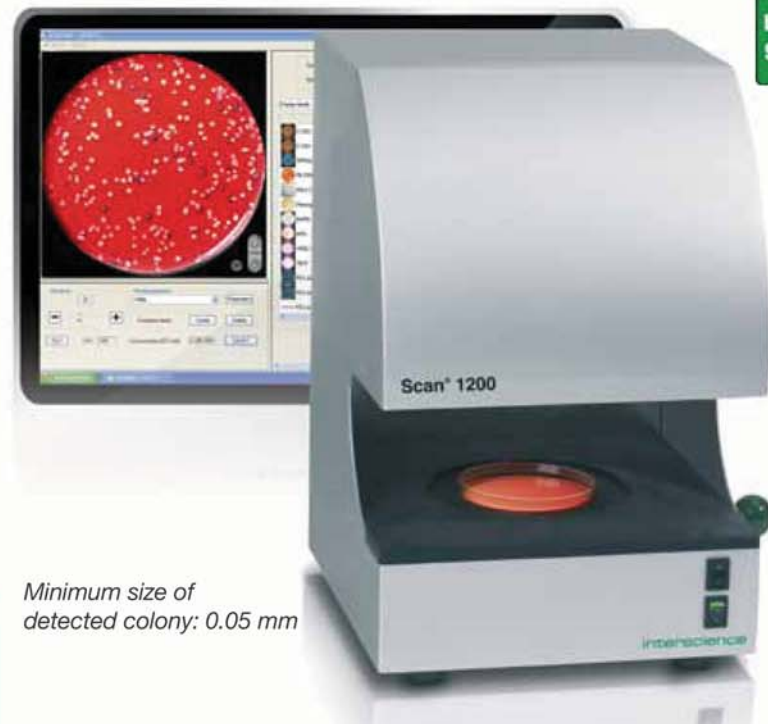
**3**  
YEAR  
GUARANTEE

**LIFETIME  
SERVICE**

Scan<sup>®</sup> 1200, high resolution automatic color colony counter, enables an adaptability to all media in labs and a great user comfort with high accuracy, an excellent reproducibility and automatic saving of images and results.

## Specifications

- HD color CCD camera, zoom x28
- 6 combinations of lighting and backgrounds
- Detects and counts up to 7 colors on the same dish
- Brightness, contrast and sensitivity are automatically optimized by the software
- Adapts itself to any kind of agar
- Minimum size of detected colony: 0.05 mm
- Automatic separation of clustered colonies
- Creation of polygonal exclusion areas
- Long lasting LED lighting
- Software in French, English, Japanese, Chinese, Russian



Minimum size of detected colony: 0.05 mm



High technology:



Traceability:



Delivered with: Scan<sup>®</sup> software CD-ROM/user manual/Firewire adapter: PCI, PCMCIA, Expresscard, 6/4pins

## Technical specifications

Scan <sup>®</sup> 1200	
Resolution	1280 x 960 pixels
Power	100-240 V - 50-60Hz
Size (L x W x H)	27 x 27 x 38 cm
Weight	8.7 kg
Reference	437 000

## Options



Barcode reader  
ref. 522 000



Adapter for  
Petrifilm<sup>™</sup>  
ref. 436 002



Adapter for  
RIDA<sup>™</sup> COUNT/  
Sanita-kun<sup>™</sup>  
ref. 436 001



Adapter for  
Compact Dry<sup>™</sup>  
ref. 436 004



Adapter for  
55 mm dishes  
ref. 436 005

- ▶ Instant results
- ▶ Traceability: automatic saving of all data, images and results
- ▶ Barcode reader and LIMS connection
- ▶ Data export to Excel<sup>™</sup>
- ▶ Minimum size of detected colony: 0.05 mm

# Scan® Software

In 1 click the detected colonies are marked with a cross and counted. The images and results are automatically saved and can be checked and re-counted anytime.

## Visualization window

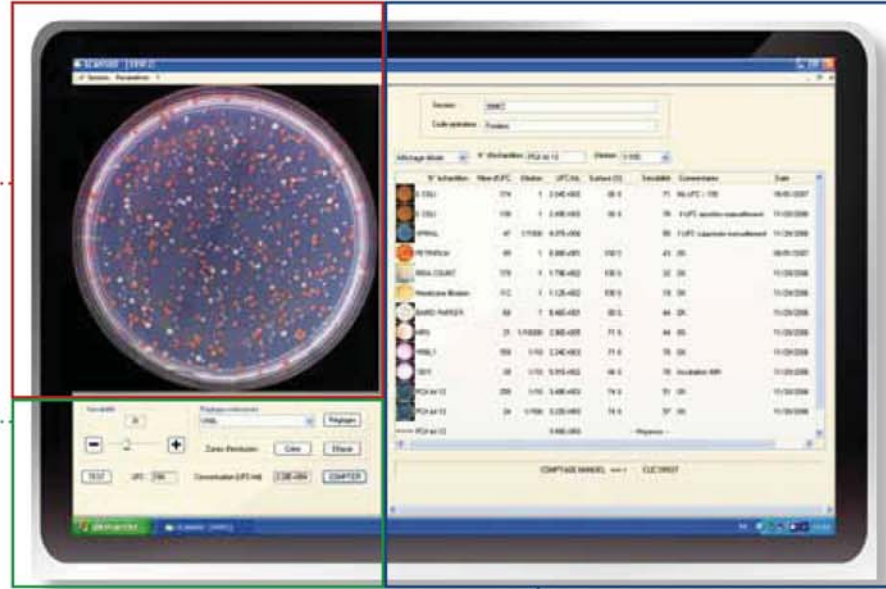
Detected colonies are highlighted and marked with a cross.

## Parameters window

Only one cursor to optimize counting. Customizable settings adaptable to any kind of agar.

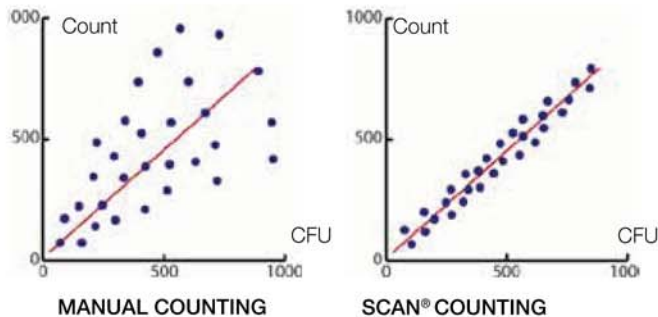
## Results window

All previously recorded data can be checked anytime.



## Reproducible results

Each count is standardized for a maximum reproducibility (study available on demand).



## Security of the sessions

The counting sessions are secured by a **security code** per operator and the saving of each counting is unalterable. Compliant with **CFR 21 part 11**:

- security of the systems
- operational controls
- documentation management.

**CFR 21**  
part 11



[www.interscience.fr](http://www.interscience.fr)

## Chromogenic environments

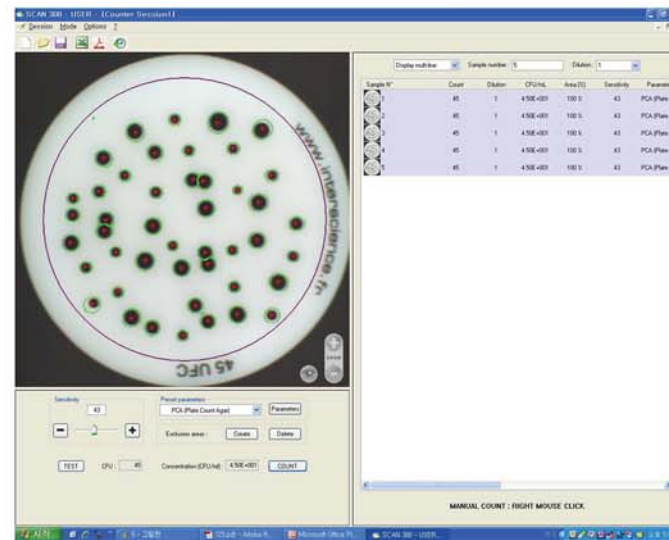
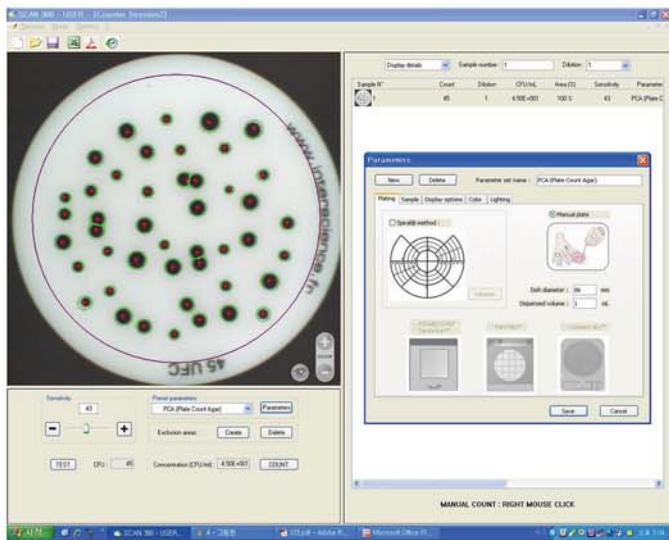
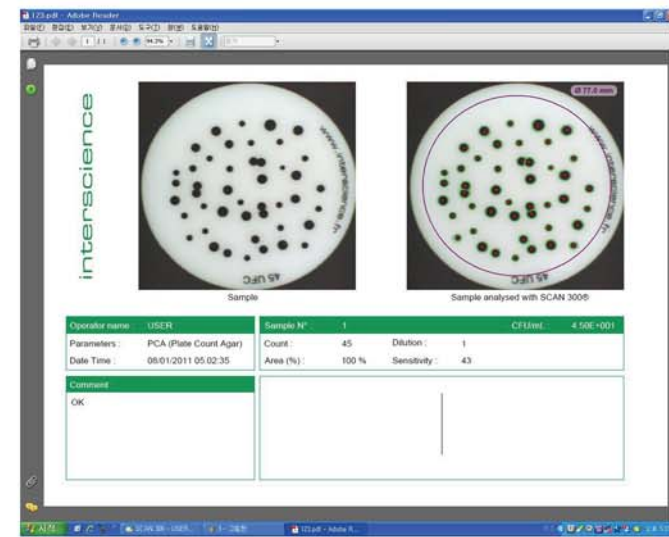
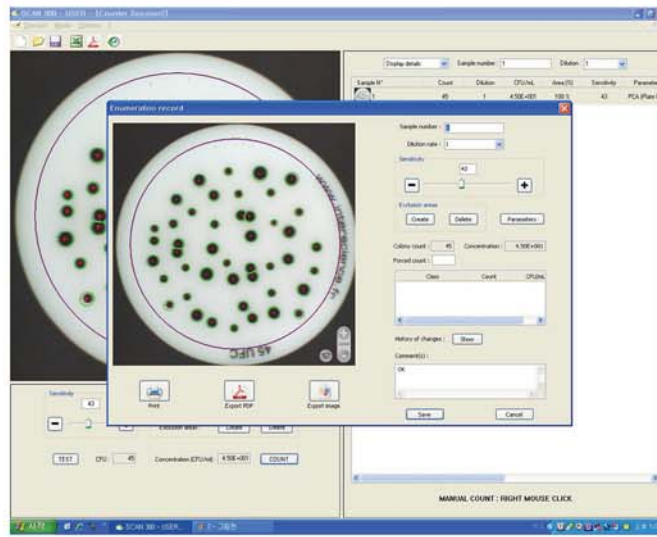
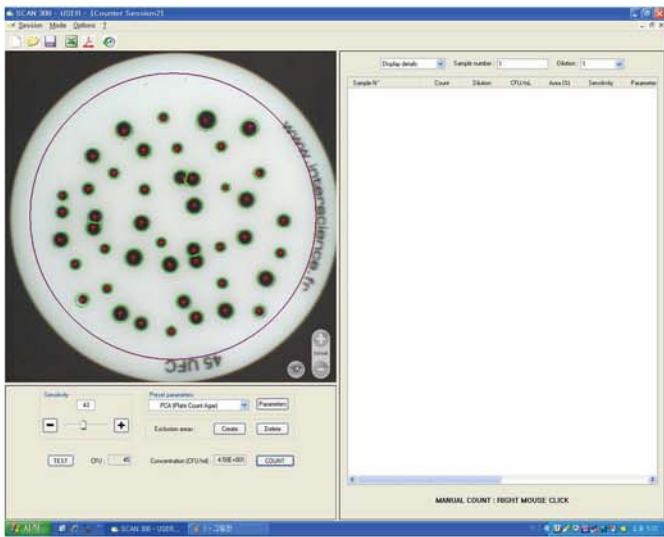


The Scan® software detects and counts up to **7 different colors** on the same dish. Save your parameters for the next counting in chromogenic environments.

## Antibiogram analysis



The **inhibition zone** measurement gives immediate results for the testing of the effectiveness of antibiotics by measuring the diameter of its action. The R.I.S results (Resistant / Intermediate / Susceptible) are given immediately by color.



# Clinet® Disinfection range

For the cleaning and disinfection of any object or equipment.

## Applications

- Laboratory: lab equipment, glassware, benchtops, small instruments, hands...
- Hospital: disinfection and cleaning of the skin before injection and surgery...
- Food production sites



### Clinet® 101

Disinfection wipes

- Bactericidal/Fungicidal/Virucidal
- Ideal for laboratories, hospitals, sample takers, domestic use
- Hypoallergenic, without aldehyde and without quaternary ammonium
- Bottle dispenser of 120 wipes
- Wipe size: 13 x 20 cm



### Clinet® 202

Disinfecting wipes in individual pack

- Bactericidal/Fungicidal/Virucidal
- Ideal for laboratories, hospitals, sample takers, traveling, daily hygiene
- Hypoallergenic, with chlorhexidine digluconate
- Individual pack, by pack of 100
- Wipe size: 26 x 18 cm



### Clinet® 303

Bactericidal and fungicidal spray ready to use

- Bactericidal/Fungicidal
- Ideal for large surfaces, bench tops, floors, rough or uneven surfaces, inaccessible areas...
- Alcohol-based preparation of glutaraldehyde, glyoxal and dimethyl-didecyl ammonium chloride
- Bottlespray, no rinsing necessary
- Capacity: 1 liter



### Clinet® 404 SaniFood®

Disinfecting wipes for food environment

- Bactericidal/Levuricidal
- For food industry professionals: disinfection of all surfaces and materials in contact with food
- Alcoholic solution (ethanol 48% v/v) and water
- Bottle dispenser of 70 wipes
- Wipe size: 20 x 20 cm

## Technical specifications

Clinet®	101	202	303	404 Sanifood	Anti-algae	10 hands
Volume	120 wipes	individual	1L	70 wipes	1L	75 ml
Box of	6	100	6	12	1	20
Reference	310 101	310 202	310 303	310 404	310 400	310 010

## Discover also



Clinet® Anti-Algae  
For laboratory water baths  
ref. 310 400



Clinet® 10 Hands  
Antibactericidal gel  
ref. 310 010

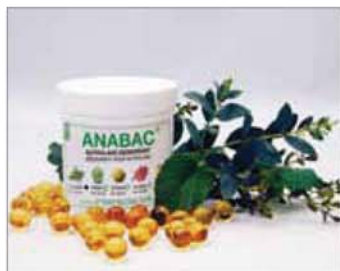
- ▶ Disinfection without rinsing
- ▶ All surfaces
- ▶ Multi-use
- ▶ Hypoallergenic
- ▶ Bactericidal/Fungicidal/Virucidal

# Anabac® Autoclave deodorant

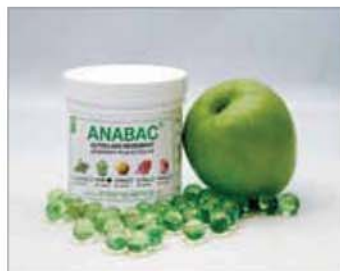
Anabac® provides a nice and fresh perfume in the lab after autoclaving.  
Choose between 5 fragrances!

## Applications

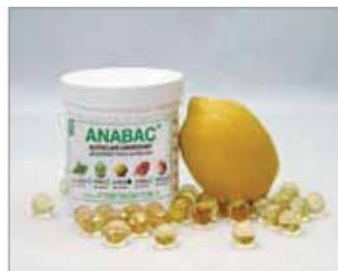
- Your work environment is nicely perfumed
- Melts without residue and has no effect on the disinfection process of the autoclave



**Classic**  
Strong fragrance  
Mint and eucalyptus extracts



**Poma**  
Fresh fragrance  
Apple extracts



**Citrus**  
Tonic fragrance  
Lemon extracts



**Floral**  
Spring fragrance  
Flower extracts



**Peach**  
Sweet fragrance  
Peach extracts

## Fresh perfume in your lab!



The autoclave smells bad.



Drop 1 capsule in the autoclave water or in a recipient with water.



The air is purified with Anabac®

## Technical specifications

Anabac®	Classic	Poma	Citrus	Floral	Peach
Pot of	100	100	100	100	100
Reference	320 100	320 200	320 300	320 400	320 500

- ▶ Work comfort
- ▶ Compatible with any autoclave
- ▶ Totally safe for autoclaving
- ▶ French perfume
- ▶ 100% biodegradable